



# TIMELESS

A collection of classic fabrics  
with a timeless appeal

# SUNBRELLA®

A BRAND THAT CARES ABOUT THE ENVIRONMENT

From production to use, Sunbrella® fabrics combine quality with durability to reduce their impact on the environment.



### PRODUCT LIFECYCLE MANAGEMENT

As part of its Sunbrella ReCycled offer, Sunbrella created the Endless Stories collection containing up to 50% recycled solution-dyed acrylic fibres. Our recycled fibres are sourced directly from production plants where waste is divided into colour groups and turned back into fibres. These fibres are then blended with the “virgin” Sunbrella fibres.



### LESS WASTE

Our quality Sunbrella fabrics do not rot or fade and are highly resistant over time. As our fabrics do not need to be replaced as often as traditional fabrics, they generate less waste.



### LOW WATER CONSUMPTION

In the solution-dyeing process, colour pigments are added to the core of the fibre, to guarantee colourfastness and save water. Throughout our manufacturing process, we take steps to reduce the amount of water we use, notably by recycling washing water through the installation of water treatment plants.



### ZERO LANDFILL

For over 30 years, Sunbrella has recycled its industrial waste such as yarn and packaging. Today, every Sunbrella manufacturing facility around the globe sends absolutely no waste to the landfill.



### 5 YEAR WARRANTY

Sunbrella acrylic fabrics carry a 5-year limited warranty for indoor and outdoor applications against abrasion, pilling, loss of colour and strength in normal usage and exposure conditions. See general warranty conditions at : [sunbrella.eu/warranty](https://sunbrella.eu/warranty)



### NON PFAS

Our company has invested significant resources to find alternatives to PFAS (perfluoroalkylate) chemicals and has developed an optimal non-PFAS finish for all Sunbrella upholstery fabrics. Our fabrics will retain their water repellency, durability, bright colours, appearance, softness, texture, ease of cleaning and strength.



### REACH REGULATION

Sunbrella has developed treatments designed and applied in strict compliance with European REACH regulations.

REACH is a European regulation designed to improve the protection of human health and the environment from the risks posed by chemicals, while enhancing the competitiveness of the EU chemicals industry.



### GREENGUARD CERTIFIED

Sunbrella upholstery fabric has achieved GREENGUARD GOLD Certification. Sunbrella upholstery fabrics are certified by GREENGUARD as contributing to healthy indoor air by being a very low emitting interior product.



### OEKO-TEX LABEL

A quality that meets human-ecological requirements. Awarded with the OEKO-TEX label (class II - products with direct contact to the skin), Sunbrella fabrics are produced without hazardous substances and do not pose a threat to health, the skin or the environment.

# TIMELESS

Designed with lasting strength and cleanability built in

Timeless is a collection of 94 fabrics. Expertly crafted, this broad palette of colours is suitable for all projects. The fabrics can stand on their own, but are also designed to serve as the basis for more trendy compositions. They are perfect for patterned or textured combinations. Indispensable essentials that stand the test of time.



### EASY TO CLEAN



### WATER & STAIN RESISTANT



### UV/FADE RESISTANT



### MOLD/MILDEW RESISTANT



### BLEACH CLEANABLE



### BREATHABLE COMFORT

	STANDARDS	CLIFF	NATTÉ	SOLIDS & STRIPES
COMPOSITION		100% Sunbrella® acrylic		
FINISH		Non PFAS, Water-Repellent & Stain-Proof		
MINIMUM USEFUL WIDTH	EN 1773	140	140	137
WEIGHT	ISO 3801 g/sqm	208	290	260
ROLL LENGTH	LM	50	50	50
SPRAY TEST	ISO 4920 Class/5	5		
COLOUR FASTNESS UV INDOOR	ISO 105 B02 Class/8	8		
COLOUR FASTNESS TO WEATHER OUTDOOR	ISO 105 B04 1000 h Class/5	4-5		
FLAME RETARDANCY		All these fabrics pass the following certifications: BS 5852-1 source 0, Cal 117, NFPA 260, EN 1021-1 (cigarette test)		
CARE INSTRUCTIONS		 Ironing reinforces the treatment		

All the values have a +/-5% tolerance



Also available on special order with a flame-retardant backing that passes the following certifications: BS 5852-1 source 1, EN 1021-2 (match test), IMO FTP code part 8. Special order of 200 lm minimum per construction (with a possibility of mixing up to 4 colours). Increases fabric weight by 175 g/m².



Also available on special order with a waterproof backing that brings a waterproofness >1500 mm according to the schmerber test. Special order of 200 lm minimum per construction (with a possibility of mixing up to 4 colours). Increases fabric weight by 100 g/m².



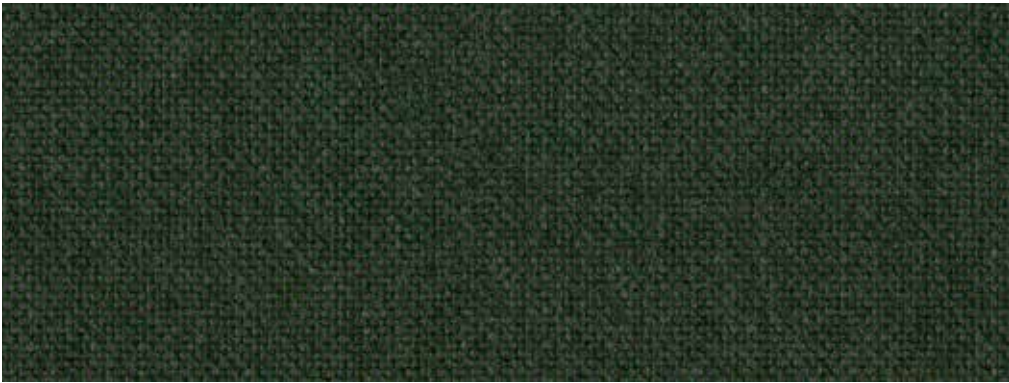
Find more technical information with the digital data sheets !



# NATTÉ



OPTIONAL FINISHES\* :



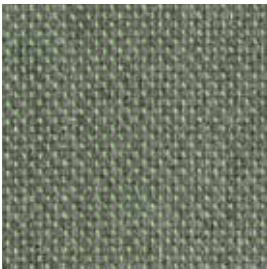
POSEDONIA  
NAT 10111 140

NEW



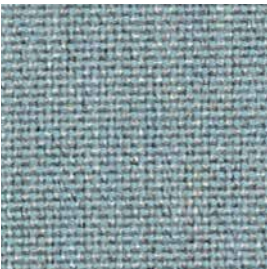
BAMBOO  
NAT 10112 140

NEW

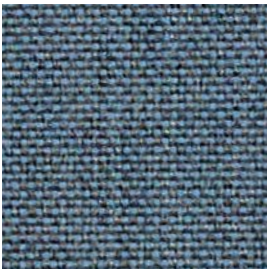


AGAVE  
NAT P097 140

NEW



FROSTY CHINÉ  
NAT 10025 140



CARBON SKY  
NAT 10064 140



CARBON BEIGE  
NAT 10065 140

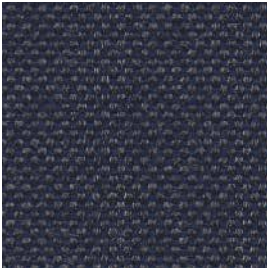


NATURE GREY  
NAT 10040 140



NAXOS  
NAT 10255 140

NEW



BLUESTONE  
NAT 10083 140

NEW



COSMOS  
NAT P094 140

NEW



CHESTNUT  
NAT 10102 140

NEW

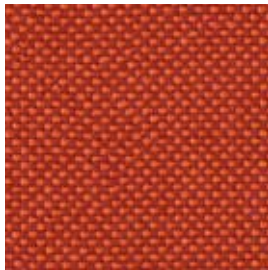


TONKA  
NAT 10101 140



POMPEI  
NAT 10256 140

NEW



SPRITZ  
NAT 10254 140

NEW



JASPE  
NAT P100 140

NEW



WHITE  
NAT 10020 140



NATURE  
NAT 10014 140



CANVAS  
NAT 10021 140



SUNLIGHT  
NAT 10250 140

NEW



HEATHER BEIGE  
NAT 10028 140



HEATHER GREY  
NAT 10029 140



HEATHER CHALK  
NAT 10150 140



LINEN CHALK  
NAT 10151 140



GREY CHINÉ  
NAT 10022 140



GRAUMEL CHALK  
NAT 10152 140



TAUPE CHALK  
NAT 10155 140



ANTIQUE  
NAT 5077 140

NEW



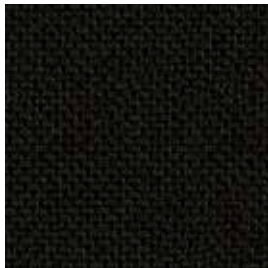
CHARCOAL CHINÉ  
NAT 10063 140



DARK TAUPE  
NAT 10059 140



SOOTY  
NAT 10030 140



MASCARA  
NAT 10078 140

NEW

\* See the characteristics on the technical page



SOLIDS



OPTIONAL FINISHES\* :



MERLOT  
SJA 3997 137

NEW



WALNUT  
SJA 3996 137

NEW



EBENE  
SJA P091 137

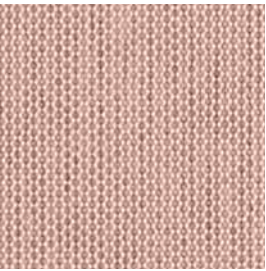
NEW



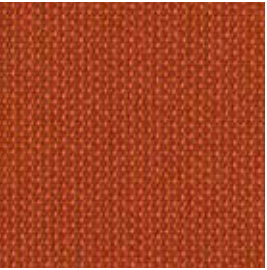
AUTUMN  
SJA 3982 137



BURGUNDY  
SJA 5436 137

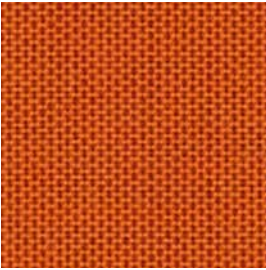


BLUSH  
SJA 3965 137

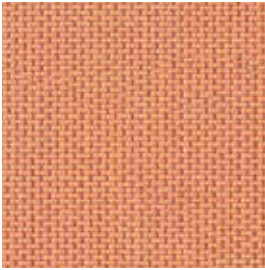


ANTELOPE  
SJA P107 137

NEW



PUMPKIN  
SJA 3969 137



CORAL  
SJA P101 137

NEW

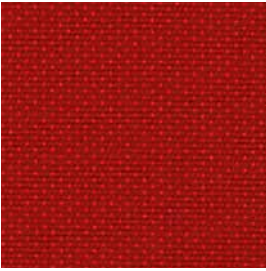


HIVE  
SJA 4000 137

NEW



LOGO RED  
SJA 5477 137



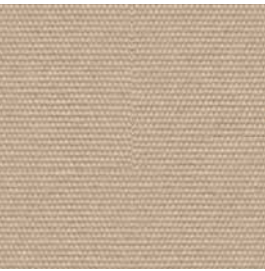
PEPPER  
SJA 3968 137



PARIS RED  
SJA 3728 137



MINK BROWN  
SJA 3127 137



ANTIQUE BEIGE  
SJA 5422 137

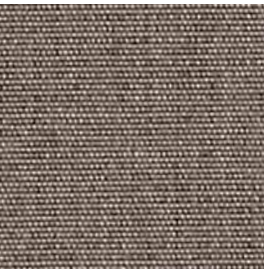


HEATHER BEIGE  
SJA 5476 137

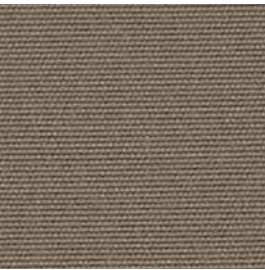


TRUSH  
SJA 3995 137

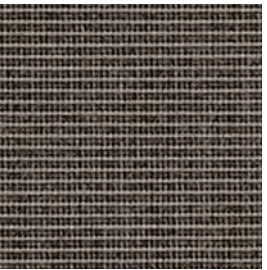
NEW



TAUPE CHINÉ  
SJA 3907 137



TAUPE  
SJA 3729 137



DARK SMOKE  
SJA 3792 137



ALMOND  
SJA 3983 137



CALATHEA  
SJA 3999 137

NEW

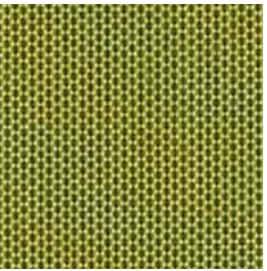


PINEA  
SJA 3998 137

NEW



MACAO  
SJA 3738 137



LICHEN  
SJA 3970 137



CELADON  
SJA P103 137

NEW



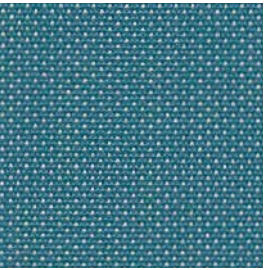
COMO  
SJA P089 137

NEW



BELHARRA  
SJA P105 137

NEW



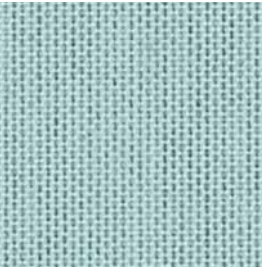
ADRIATIC  
SJA 3941 137



TRUE BLUE  
SJA 5499 137



ARUBA  
SJA 5416 137



CURACAO  
SJA 3964 137

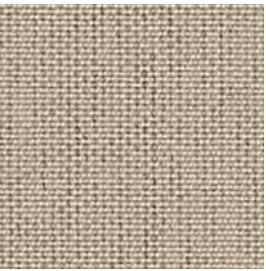


MINERAL BLUE CHINÉ  
SJA 3793 137



FJORD  
SJA P093 137

NEW



PAPYRUS  
SJA P055 137

NEW



NATURAL  
SJA 5404 137



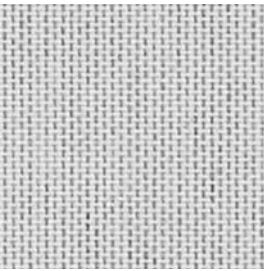
CANVAS  
SJA 5453 137



LIN  
SJA 3780 137



STONE  
SJA 3988 137



MARBLE  
SJA 3966 137



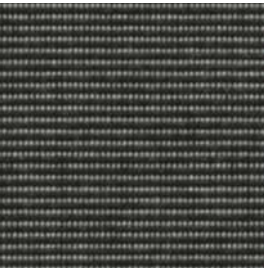
SILVER GREY  
SJA 3741 137



SHINGLES  
SJA 3706 137



LEAD CHINÉ  
SJA 3756 137



CHARCOAL  
SJA 3705 137



TITANIUM  
SJA P054 137

NEW



ARDOISE  
SJA 3737 137



FLANELLE  
SJA 3757 137



MISTRAL  
SJA P104 137

NEW



CARBON  
SJA 3906 137



SOOTY  
SJA 3758 137



BLACK  
SJA 5408 137

\* See the characteristics on the technical page



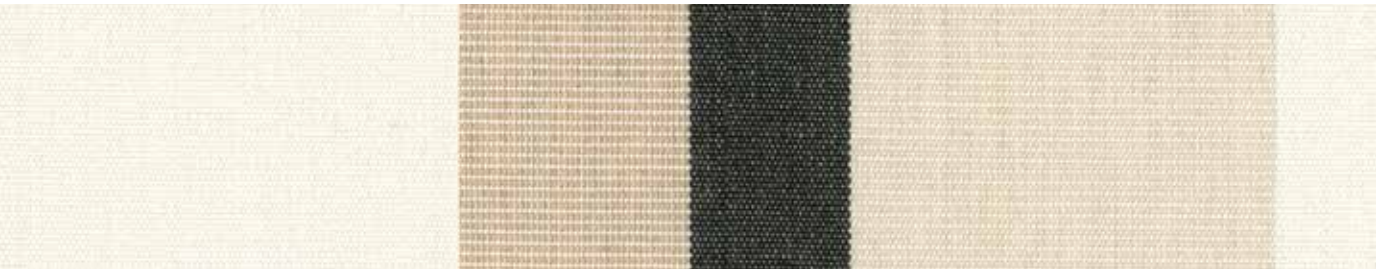
STRIPES

NEW

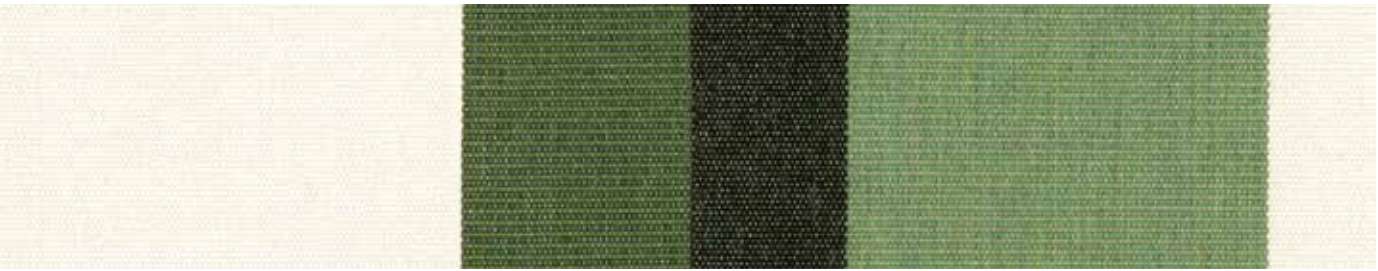
REPEAT:  
45,4 cm



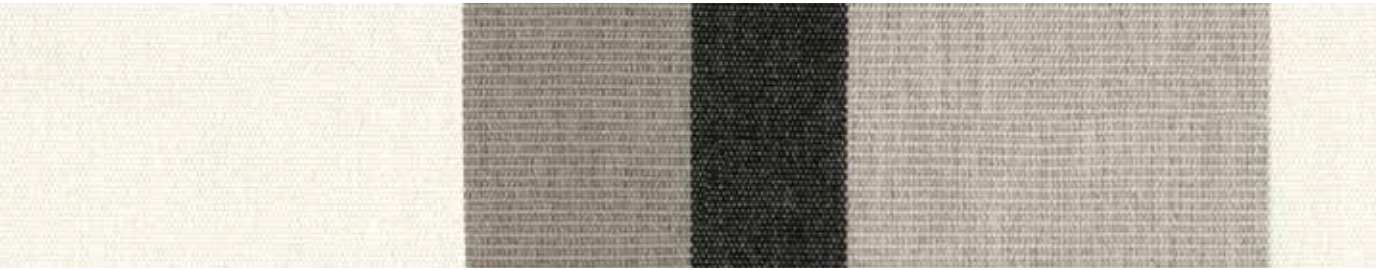
OPTIONAL FINISHES\* :



CANYON VERDON  
SJA 4002 137



CANYON COLCA  
SJA 4003 137



CANYON TENAYA  
SJA 4004 137

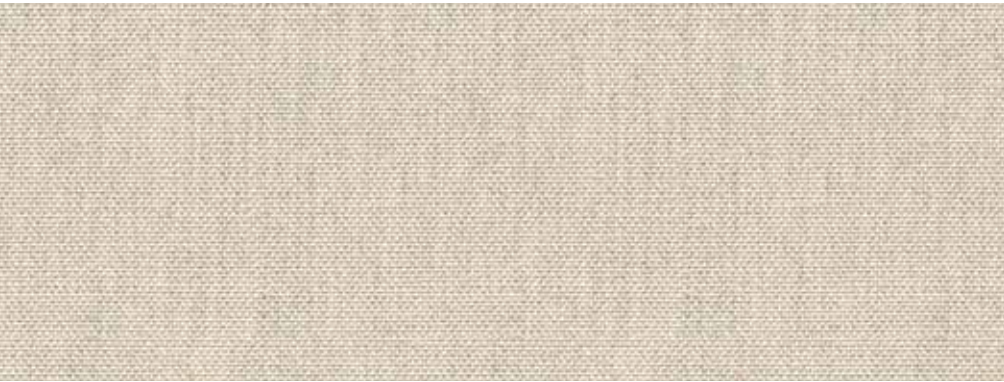
\* See the characteristics on the technical page

CLIFF

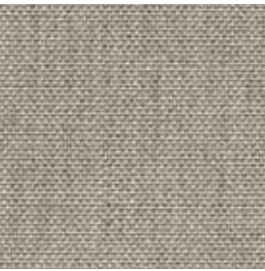
NEW



OPTIONAL FINISHES\* :



OBVIOUS  
CLI B123 140



CLOUD  
CLI B125 140



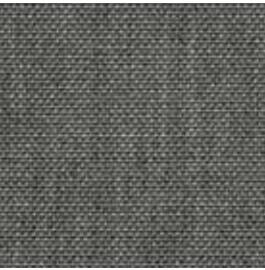
MIST  
CLI B124 140



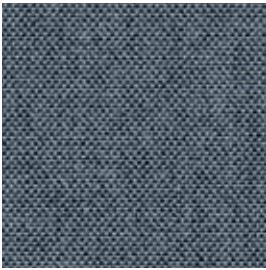
JACKET  
CLI B128 140



PETRA  
CLI B129 140



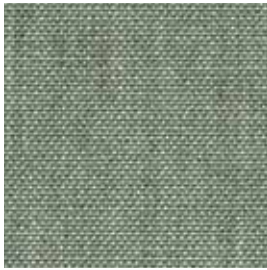
SLATE  
CLI B126 140



DENIM  
CLI B127 140



FIR  
CLI B131 140



SPA  
CLI B130 140

\* See the characteristics on the technical page

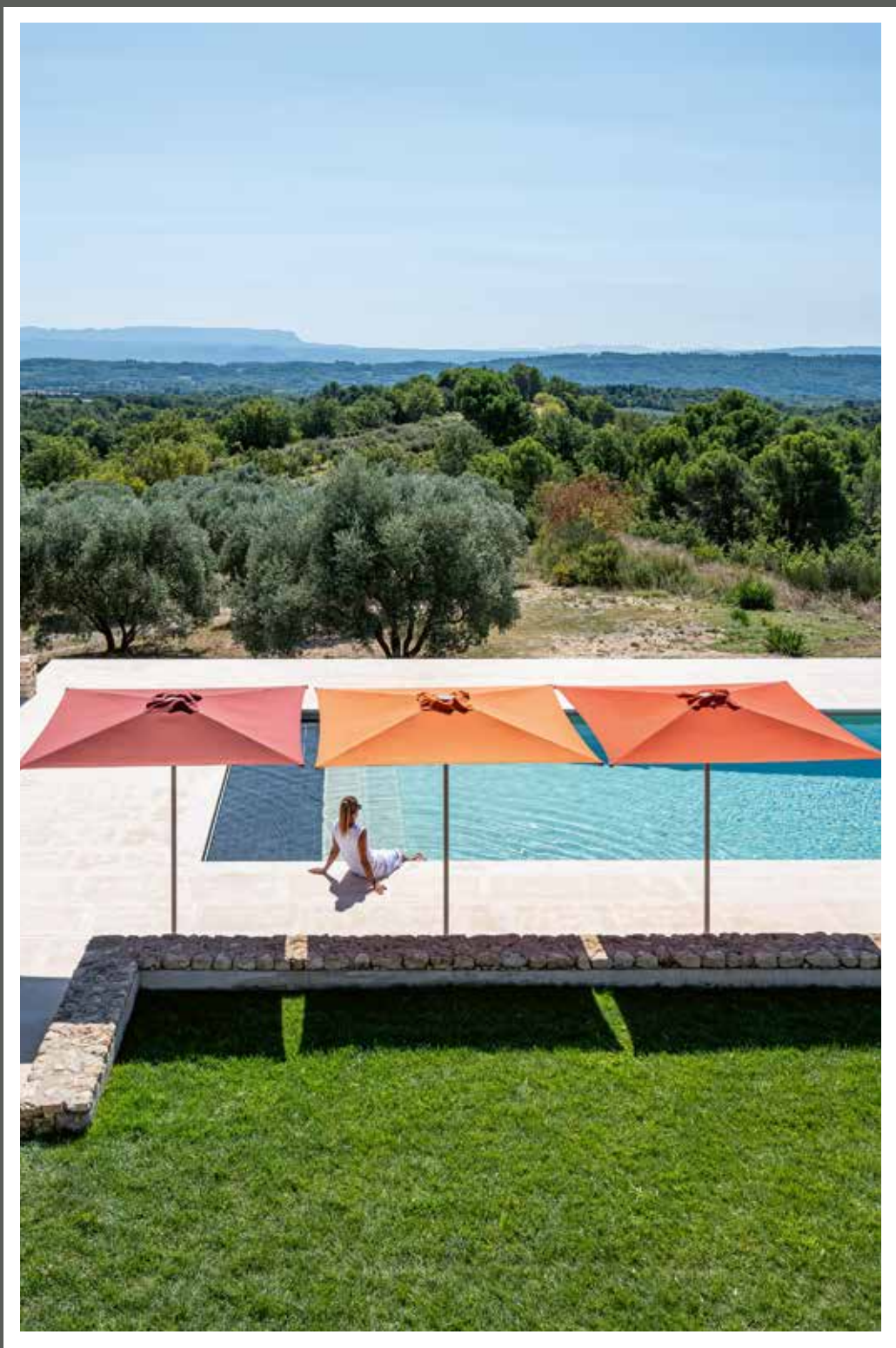


FROM TOP TO BOTTOM: CLIFF MIST B124, SOLID ANTELOPE P107, CLIFF JACKET B128, CLIFF OBVIOUS B123, NATTÉ SOOTY 10030, SOLID WALNUT 3996





FROM TOP TO BOTTOM AND LEFT TO RIGHT: SOLID BLUSH 3965, SOLID PUMPKIN 3969, TUNDRA SOUK J474, TUNDRA RYE J480, WANDER EVEREST J623, SOLID CORAL P101



FROM LEFT TO RIGHT: SOLID AUTOMNE 3982, SOLID CORAL P101, SOLID PUMPKIN 3969





FROM TOP TO BOTTOM AND LEFT TO RIGHT: CARAT GRENAT J637, KHAIMA KALAHARI J499, SOLID WALNUT 3996, LOPI CHAI R080, TERRITORY ALUM J643, STRIPE CANYON VERDON 4002, SOLID WALNUT 3996, LOPI FAWN R081



CLIFF OBVIOUS B123





FROM TOP TO BOTTOM AND LEFT TO RIGHT: KHAIMA MORINGA J498, LOPI BARIBAL R084, SLOW FOREST 19104, STRIPE CANYON COLCA 4003, SOLID CALATHEA 3999



STRIPE CANYON COLCA 4003





[sunbrella.eu](https://sunbrella.eu) 

