

# WOVENFLOORING

BY DICKSON



**DICKSON®**  
woven flooring



# WOVENFLOORING

BY DICKSON

The Dickson Woven Flooring collection stands for expertise and attractive, innovative designs. Priding ourselves on our workmanship, we're convinced of the benefits of innovation and continuously drive the performance of our products.

With the new BORÉAL collection, the Dickson Design Studio invites you to explore new dimensions and re-enchants the aesthetics of resilient floor coverings with fifteen new references. It is also a major turning point as it is the first biosourced collection from Dickson Woven Flooring with the introduction of two new yarn colours made from natural and renewable materials, thus initiating the gradual transition towards environmentally-friendly alternatives.

To best meet your needs, our Research & Development team is working on simple, gradual improvements as well as revolutionary advances such as our CleanGard - Integrated Protection technology: a polyurethane (PU) coating directly integrated into our woven floors. We are proud to be the first and only company to offer this innovation exclusively on the market.

Dickson woven floor coverings enhance a multitude of public spaces: offices, shops, restaurants, educational establishments and leisure facilities throughout the world. Our renowned customers include, for example, Dior, EY and Bouygues Challenger. References that testify to our expertise and excellence.

## CONTENTS

CleanGard : our PU surface protection .....	4
A step towards biosourcing .....	5
The properties of our woven flooring .....	6
Environmental commitments .....	12
Design approach .....	14
Our ranges .....	16
Available formats .....	26
Floor configurator .....	27
Collection overview .....	28
Technical factsheet .....	30



# INNOVATION

## DICKSON : A POLYURETHANE COATING

### WOVEN FLOORING THAT'S MORE **DIRT RESISTANT & EASIER TO CLEAN**

The CleanGard technology adds a protective overlay to the woven surface, delaying its soiling while enhancing its stain resistance and ease of maintenance.

### OPTIMAL PROTECTION

The PU coating is integrated directly into the finished product, providing additional protection and ensuring that the material looks the same. CleanGard technology is odourless and contributes to a healthy interior.



#### THICKNESS

The product maintains its original performance including a total thickness of 4 mm, all layers combined



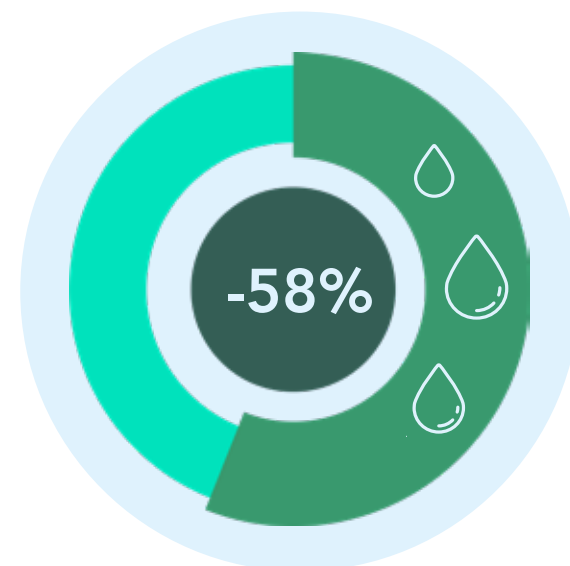
#### TRANSPARENCY

CleanGard technology does not affect the appearance of the product, which retains its attractive design



#### EASY MAINTENANCE

Much easier maintenance for less regular routine cleaning



58% WATER CONSUMPTION SAVED  
WITH THE NEW MAINTENANCE SCENARIO



## A STEP TOWARDS BIOSOURCING

### TOWARDS A MORE **HARMONIOUS AND CIRCULAR ECONOMY**

At the dawn of an era in which our world must make a commitment, our Research & Development engineers have begun redesigning our product by replacing some of its yarn components with materials of plant origin, thus marking our commitment to a sustainable and responsible future. Dickson Woven Flooring is pursuing its ambitious mission to replace conventional raw materials derived from fossil fuels with bio-based alternatives.

### 100% BIOBASED YARNS BY 2026

The Boréal collection marks a turning point, beginning the gradual transition to environmentally-friendly alternatives. This evolution is taking place progressively as we restock, with yarns made from natural and renewable materials. This improvement in our product is part of our commitment to significantly reducing our carbon footprint, since the woven top layer is made up of **33% bio-sourced material**.





# DICKSON WOVEN FLOORING

## THE LOOK AND FEEL OF TEXTILE WITH TOTALLY UNIQUE PROPERTIES

Woven from revolutionary fibres, Dickson® floor covering options combine the remarkable durability of vinyl with the aesthetic appeal and texture of traditional carpeting.

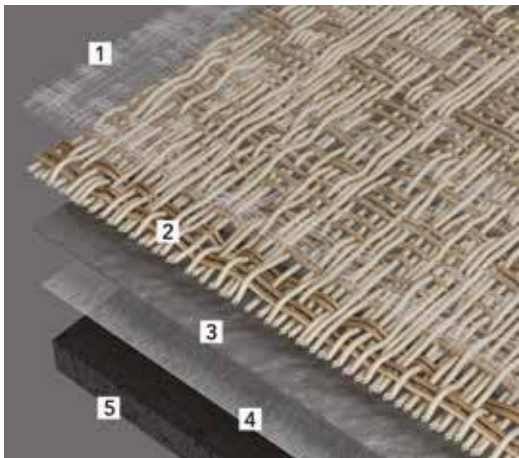
A truly innovative technology developed for the most demanding environments such as hotels, offices, stores and restaurants, Dickson flooring is durable, comfortable, attractive, and easy to maintain. This performance is further enhanced by CleanGard technology: a polyurethane coating incorporated into the woven wear surface for added protection and easier cleaning.

### WOVEN WEAR SIDE WITH PU COATING



1. PU-coated woven wear side

### HIGH-TECH BACKING



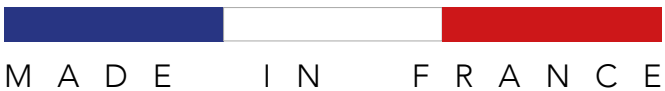
- 1. Polyurethane surface protection
- 2. Woven monofilament wear layer
- 3. Very high density foam
- 4. Fibreglass layer
- 5. Acoustic vinyl underlay (18 db/aw 0.05)



## GLOBALLY RECOGNIZED QUALITY

Crown jewel of the technical textile industry, Dickson is now recognized the world over as the benchmark for supreme quality indoor and outdoor French-made fabrics. Its products, marketed under two flagship brands, DICKSON® and SUNBRELLA®, are used by the top names in design, architecture and boating.

The group’s main growth engine– innovation – enables Dickson to constantly provide a diverse array of products and a wide range of technical and designer textiles, all aimed at improving people’s homes and work environments. The company currently provides solutions for four key markets: solar protection, outdoor living spaces, indoor and outdoor decoration, and boating equipment. A combination of technical expertise and creativity, the Dickson style shines in more than 110 countries on 5 continents.



# COMFORTABLE & DURABLE

## FLOORS PLAY A KEY ROLE IN THE COMFORT OF A ROOM

To ensure optimum convenience and well-being, our R&D team has created ultra-smart flooring solutions using advanced technology: thermal and acoustic insulation, a non-slip surface that's comfortable to walk on...

### EXCEPTIONAL ACOUSTIC INSULATION CAPABILITIES

A leading-edge innovation, the SoundGuard® technology was specifically designed to improve comfort and noise absorption.

Dickson developed a high performance soundproof backing that effectively absorbs ambient noise and significantly reduces the transmission of impact noise.

Acoustic comfort is truly essential to people's well-being and ideal for offices and hotels.



#### NON-SLIP SURFACE

The woven structure of Dickson® flooring naturally prevents slipping, making it particularly appropriate for public buildings where safety standards often determine the materials decorators can use.



#### QUALITY THERMAL INSULATION

Good quality thermal insulation can dramatically improve the comfort of a room. Unlike hard flooring, Dickson® flooring offers warmth for greater well-being and energy savings.



#### ANTISTATIC PROPERTIES

Formulated to minimize static electricity generated from walking on most carpeting, Dickson® flooring solutions provide effective protection against unpleasant shocks.

## DICKSON® FLOORING WAS DESIGNED FOR HEAVY COMMERCIAL USE AND RESIDENTIAL USE

Woven from revolutionary vinyl fibres and combined with a high performance backing, it is extremely tough-wearing.

An innovative textile solution at the leading edge of the hottest decorating trends, perfectly adapted to the most demanding environments in terms of practicality and durability.

### CLASSIFICATION FOR USE

To meet heavy use classification criteria, our flooring is subjected to standardized tests that reproduce the same tough conditions as the situations in which they are intended for.

The European standard establishes a classification system based on the level of wear and requirements imposed on the areas where each type of flooring will be used.



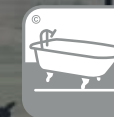
All our collections have been approved for **33-Heavy commercial traffic**.

**This is the highest classification for textile flooring.**



### FIREPROOF

Dickson® flooring has excellent flame resistance. Our products have been successfully tested and certified in accordance with European (EN 13501-1) and American (ASTM E 648) fire safety standards.



### WATERPROOF

Moisture is not a problem for Dickson® flooring. It is waterproof, rotproof and ultra-stable. It is perfectly suitable for wet areas.



### COLOURFAST

Even when exposed to intensive sunlight, Dickson® flooring retains its gorgeous original colours.

**DICKSON®**  
woven flooring



# EASY TO INSTALL & TO MAINTAIN

## DICKSON® WOVEN FLOORING IS FAST AND SIMPLE TO INSTALL ON ANY KIND OF SURFACE

Like any other flexible flooring, installation is done by gluing the material directly to any kind of flat, clean, dry, stiff surface. To save time and increase flexibility, you can also install the tiles with a non-permanent glue.

## THE FIRST WOVEN VINYL FLOORING ENSURING A CLEAN CUT

The FrayGuard® technology developed by Dickson minimizes the common phenomenon of fraying when cutting carpeting and boosts durability of the weave. It guarantees clean-cut edges for fast, efficient, impeccable installation.



**TILE**  
Dimensions :  
50x50 cm



**ROLL**  
Width : 2m



**SHAPE  
LAB**

DICKSON WOVEN FLOORING ALLOWS USERS TO ACHIEVE A CLASSIC LOOK OR CREATE ORIGINAL LAYING COMBINATIONS BY MIXING PRODUCTS TO CREATE RHYTHMS, PERSPECTIVES AND REFLECTIONS THAT TRANSFORM INTERIORS DEPENDING ON THE INTENSITY OF THE LIGHT.



**FRAYGUARD®**  
CLEAN CUT  
by DICKSON®

**CLEANGARD®**  
INTEGRATED PROTECTION  
by DICKSON®



## A UNIQUE COMPOSITION FOR EXTREMELY DURABLE, EASY TO MAINTAIN FLOORING

Although the structure of the weave makes it appear to have a certain relief element, the exclusive assembly process used by Dickson guarantees it is absolutely waterproof, dustproof and stainproof. The warp and weft yarns are heat-sealed together and assembled to the backing while they are still hot and coated with a polyurethane coating.

Dickson® woven flooring ensures optimal quality sanitary conditions. Rotproof, antibacterial, and impervious to dust mites, mould spores and fungus, the impermeable surface is strengthened with a polyurethane surface protection to make the hygienic maintenance of floors easier and avoid hard-to-remove stains such as coffee, wine, fruit conserve and blood.



### STAIN RESISTANT

Dickson® flooring was designed to resist stains by not absorbing liquids and thus making spills quick and easy to clean.



### LOW MAINTENANCE

The product takes less time to clean and requires less regular routine maintenance. As with linoleum or tiling, basic cleaning can be done with a vacuum, broom and warm water mixed with a neutral detergent.



### SMART TIP

The colour of your flooring directly affects the maintenance requirements. Dirt and stains are less visible on chiné (marbled) shades than solid colours (whether light or dark). Depending on the location and the amount of traffic, this is an important aspect to consider when making your selection.



See our detailed recommendations for care  
and maintenance of our floor coverings at  
[dickson-constant.com](http://dickson-constant.com)

**DICKSON®**  
woven flooring

# RESPECTING THE ENVIRONMENT

## AN ENVIRONMENTALLY FRIENDLY COMPANY

Well aware of the environmental stakes, Dickson launched a major campaign under the banner of its GreenOvation initiative. By optimising its energy management, minimising the use of chemical substances and obtaining the ISO 14001 (Environmental Management) - ISO 45001 (Health and Safety at work) - ISO 9001 (Quality Management) - ISO 50001 (Energy Management) certificates and the CAP 26000 (Social Responsibility) label, Dickson has clearly established its position as an eco-friendly business that cares about curbing its environmental footprint as much as possible.

## 0% PHTHALATE

To improve the well-being of users, air quality and indoor comfort, the woven upper layer of our Dickson floor coverings has always been phthalate-free.

As we believe quality materials play a vital role in their environment, the challenge presented by this new collection for our R&D department was to successfully produce flooring with 0% phthalate - including the bottom layer.

This commitment to remove controversial substances from our new collection reflects Dickson's innovation approach to the environment and complies with European REACH standards.

## FLOORSCORE CERTIFICATION



Good indoor air quality is essential because people spend most of their lives indoors. The air we breathe affects both our health and our well-being, from minor disturbances, such as odours, skin and eye irritations, to the development or aggravation of more serious ailments, such as respiratory allergies.

Independently tested and certified by the Resilient Floor Covering Institute (RFCI), Dickson® flooring meets the official emissions criteria for volatile organic components (VOC) and is recognized as contributing to good indoor air quality.

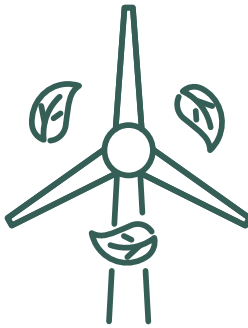


# WITH A REDUCED CARBON FOOTPRINT



## SUSTAINABILITY & DESIGN

Priority to eco-design of our Research & Development



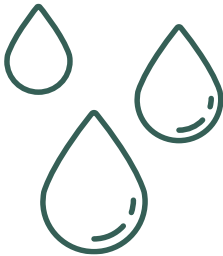
## EUROPEAN SOURCING

100 % of our components come from european suppliers

**37,5%**  
reduction in the product's overall carbon footprint

## MAINTENANCE SPACING

Cleangard innovation for ease of maintenance and stain resistance.  
58% savings in water consumption



## TRANSPORT REDUCTION

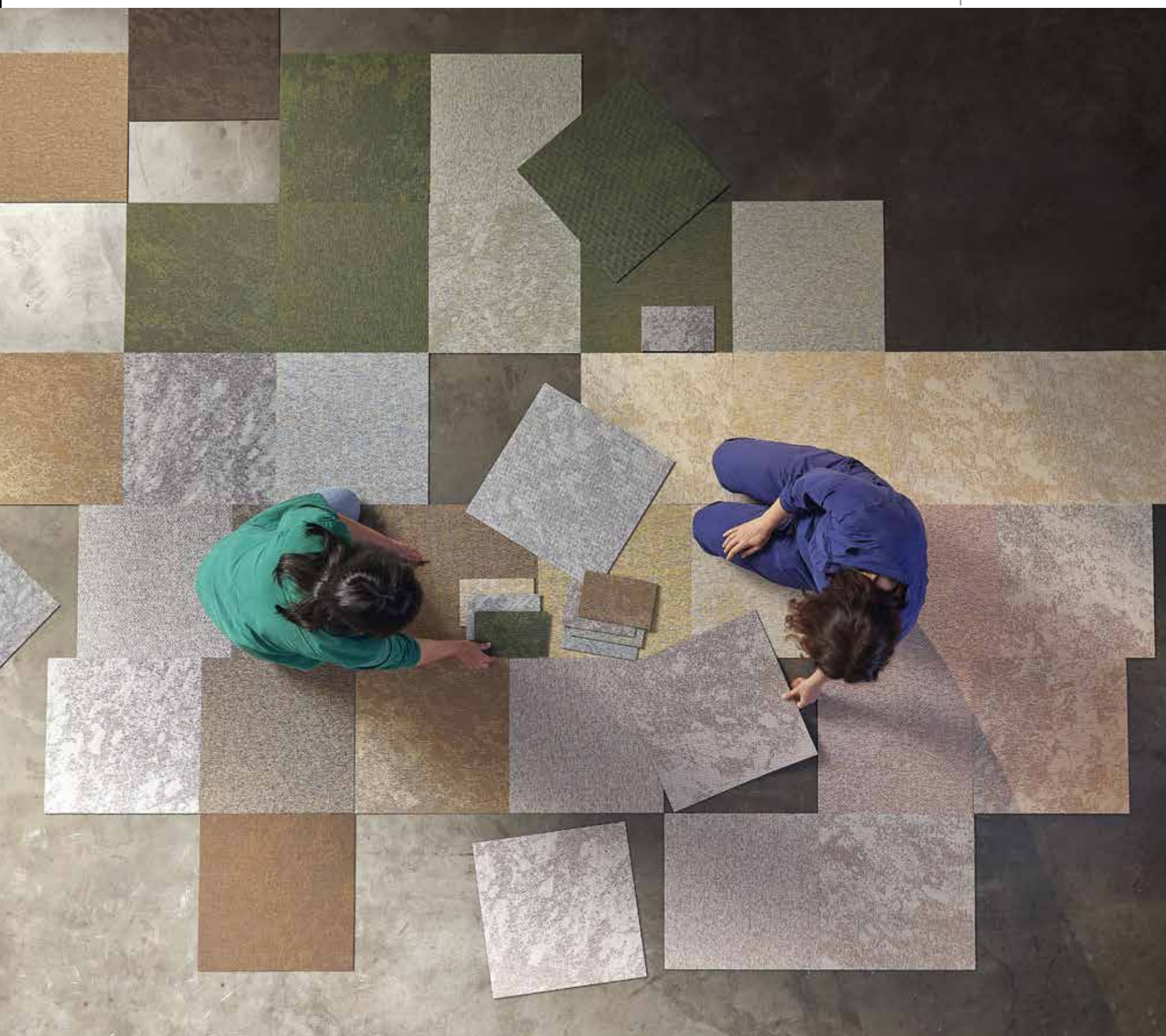
Less than 3000 km travelled for all our raw materials



Find out more :







# A DESIGNER COLLECTION

Drawing on more than one hundred and eighty years of know-how and internationally renowned expertise, Dickson has developed a collection of woven flooring made using revolutionary fibres. The combination of warp and weft yarns on the wear side allows users to create different looks and colour nuances for varying perspectives depending on the intensity of the light.

Thanks to a range of available shapes and a palette of unique colours, it has never been easier to create your own style and make your flooring the cornerstone of your decorative scheme in which the floor is the canvas on which you express your creativity and the flooring is a work of art.

## INSPIRED BY NATURE



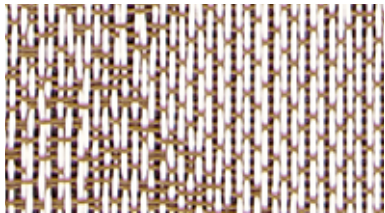
# BORÉAL

WOVEN FLOORING BY DICKSON

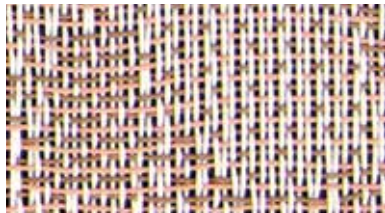
Boréal was conceived as a celebration of the grandeur and prestige of a noble and timeless material of excellence: marble. Every graphic detail has been carefully considered to convey the essence and richness of this natural material. Its majestic scale makes Boréal an extraordinary landscape, ready to sublimate the environments it adorns.



Pattern repeat: W 200 cm / 78.74" x H 167 cm / 65.75"



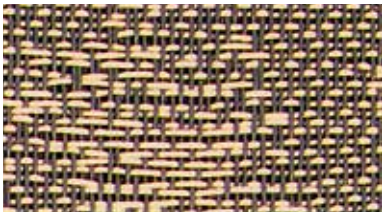
LATTE  
BORE J575 D50  
BORE J575 200



AURORA  
BORE J579 D50  
BORE J579 200



MIST  
BORE J583 D50  
BORE J583 200



MEDAL  
BORE J570 D50  
BORE J570 200



BRONZE  
BORE J581 D50  
BORE J581 200



CALCITE  
BORE J577 D50  
BORE J577 200



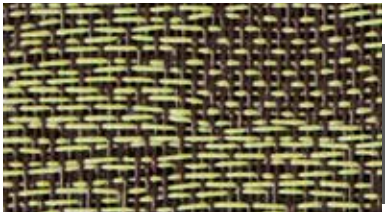
DUNE  
BORE J573 D50  
BORE J573 200



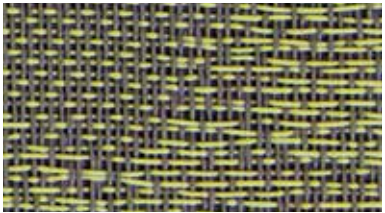
HAVANA  
BORE J569 D50  
BORE J569 200



THUNDER  
BORE J572 D50  
BORE J572 200



EVERGREEN  
BORE J580 D50  
BORE J580 200



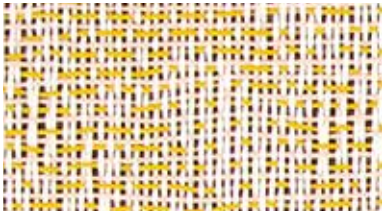
MATCHA  
BORE J571 D50  
BORE J571 200



PISTACCHIO  
BORE J574 D50  
BORE J574 200



FJORD  
BORE J582 D50  
BORE J582 200



GOLD  
BORE J578 D50  
BORE J578 200



Tiles Boréal J574 Pistacchio - Laying a row of tiles in one direction and the next row turned through 90°

\* This colour is made to order - minimum of order 200 m²



# ÉLÉGANCE

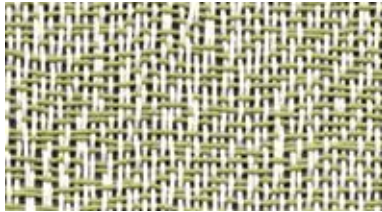
WOVEN FLOORING BY DICKSON

Élégance, with its delicately velvety texture, now welcomes seven new references, with a focus on optimism and sustainability, which will gracefully contribute to making your environments unique and convivial. We've drawn on nature's repertoire of sunny beiges and plant greens for the gentle energy and serenity they convey, and because we're convinced they'll appeal over the long term.

50 x 50 cm  
19,69" x 19,69"

200 cm  
78,74"

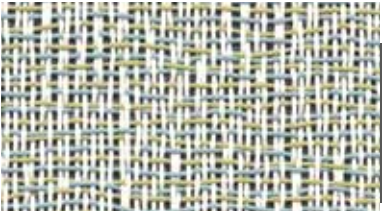
Pattern repeat: W 158 cm / 62.20" x H 250 cm / 98.42"



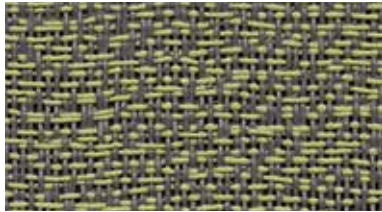
BAMBOO  
 ELEG J565 D50  
 ELEG J565 200



STRAW  
 ELEG J564 D50  
 ELEG J564 200



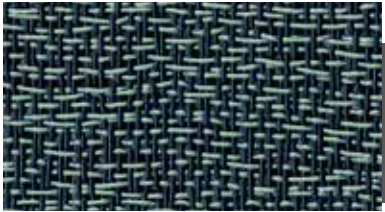
CELADON  
 ELEG J568 D50  
 ELEG J568 200



THYME  
 ELEG J563 D50  
 ELEG J563 200



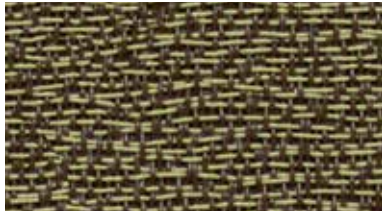
PEARL BROWN  
 ELEG J553 D50  
 ELEG J553 200



ALMOND GREEN  
 ELEG J551 D50  
 ELEG J551 200



ARDEN GREEN  
 ELEG J530 D50  
 ELEG J530 200



VETIVER  
 ELEG J567 D50  
 ELEG J567 200



MALT  
 ELEG J562 D50  
 ELEG J562 200



ISLAY BLUE  
 ELEG J533 D50  
 ELEG J533 200



PACIFICA BLUE  
 ELEG J552 D50  
 ELEG J552 200



SMOKE  
 ELEG J531 D50  
 ELEG J531 200



BLOOM  
 ELEG J566 D50  
 ELEG J566 200



Hexagons Elegance J565 Bamboo

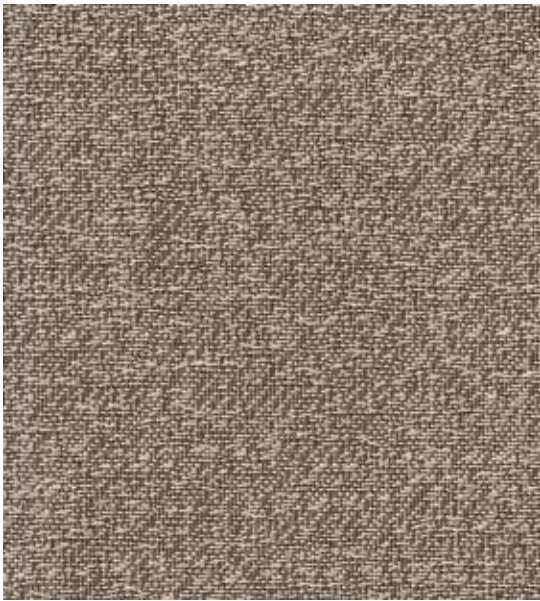
\* This colour is made to order - minimum of order 200 m²



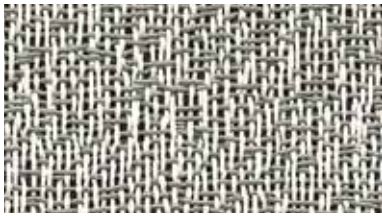
# MIRAGE

WOVEN FLOORING BY DICKSON

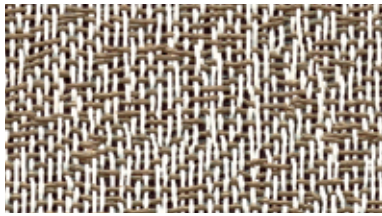
Mirage has a delicately uneven, raw and vibrant surface. A perfect balance between soft and intense, its natural-looking texture is inspired by sisal flooring. This range is available in a broad range of refined colours, from light to dark, with neutral tones complementing more fiery shades.



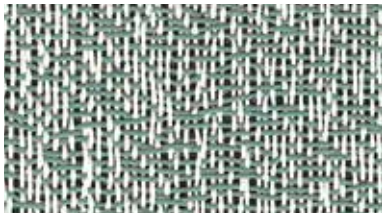
Pattern repeat: W 160 cm / 62.99" x H 250 cm / 98.42"



MOON  
MIRA J557 D50  
MIRA J557 200



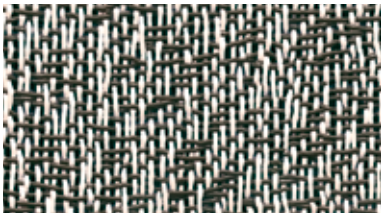
UMBER  
MIRA J556 D50  
MIRA J556 200



POLAR  
MIRA J558 D50  
MIRA J558 200



ARIZONA BRONZE  
MIRA J526 D50  
MIRA J526 200



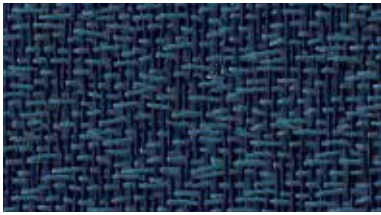
BETULA  
MIRA J559 D50  
MIRA J559 200



DUSTY GREEN  
MIRA J548 D50  
MIRA J548 200



WILD EARTH  
MIRA J525 D50  
MIRA J525 200



ANTRIM BLUE  
MIRA J549 D50  
MIRA J549 200



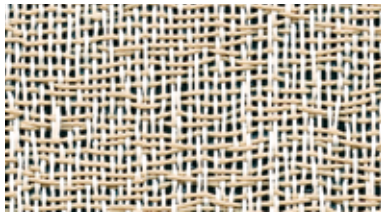
VIPER BLUE  
MIRA J528 D50  
MIRA J528 200



SILICON SILVER  
MIRA J523 D50  
MIRA J523 200



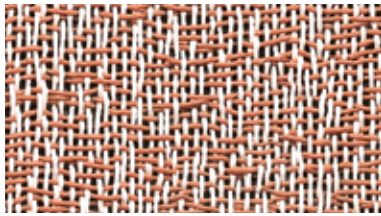
SÉPIA  
MIRA J555 D50  
MIRA J555 200



SHELL  
MIRA J554 D50  
MIRA J554 200

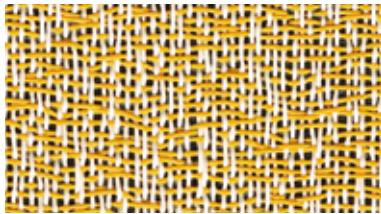


CHAMPAGNE BEIGE  
MIRA J527 D50  
MIRA J527 200



SERANDITE  
MIRA J561 D50  
MIRA J561 200

Made to Order\*



ORPIMENT  
MIRA J560 D50  
MIRA J560 200

Made to Order\*



PERSIAN YELLOW  
MIRA J547 D50  
MIRA J547 200

Made to Order\*



Hexagons Mirage J554 Shell

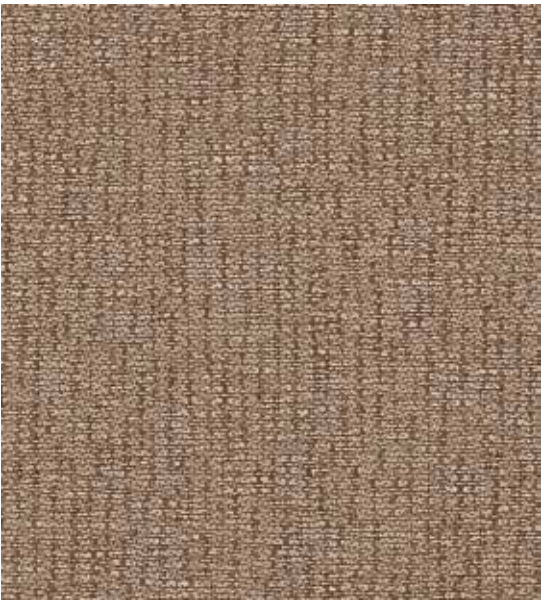
\* This colour is made to order - minimum of order 200 m²



# ALLURE

WOVEN FLOORING BY DICKSON

Allure has a delightfully colourful, grained texture. The grain is mostly dark, creating an interplay with the colourful base. The delicate tones subtly bring the surface to life. A few deeper touches accentuate the softness of this range with its fresh hues.



Pattern repeat: W 49.38 cm / 19.44" x H 57.41 cm / 22.60"



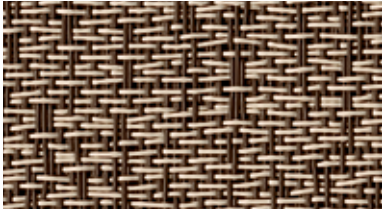
Tiles & XL tiles Allure J516 Ceramic Grey



IRIDIUM SILVER  
ALLU J514 D50  
ALLU J514 200



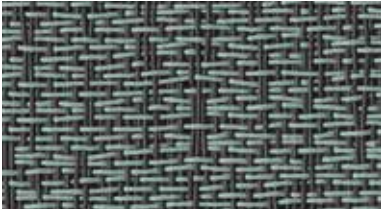
SNOW SHADOW  
ALLU J517 D50  
ALLU J517 200



CERAMIC GREY  
ALLU J516 D50  
ALLU J516 200



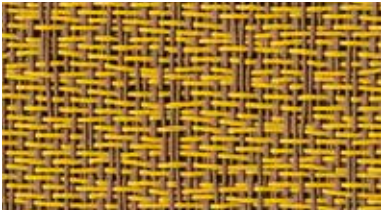
ZAFFRE BLUE  
ALLU J515 D50  
ALLU J515 200



CELADON GREEN  
ALLU J539 D50  
ALLU J539 200



CUMBERLAND BEIGE  
ALLU J518 D50  
ALLU J518 200



YELLOW TAUPE  
ALLU J541 D50  
ALLU J541 200



ORKNEY TAUPE  
ALLU J540 D50  
ALLU J540 200



CALDERA ROSE  
ALLU J584 D50  
ALLU J584 200



Prisms Allure J514 Iridium Silver & J517 Snow Shadow



# ÉCUME

WOVEN FLOORING BY DICKSON

Like froth or fluffy clouds blending harmoniously with another surface of nuanced shades, Écume has an elegant, contemporary pattern. Available in a range of deep, natural colours, its texture adapts to any room design.



Pattern repeat: W 80 cm / 31.5" x H 78 cm / 30.71"



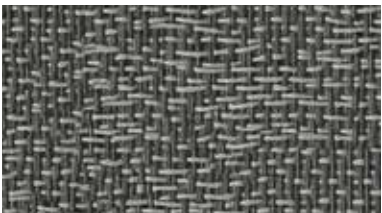
Gammas Ecume J543 Vertigo Blue & J544 Diamond Blue EY Tunis - Photo © Yoann Cimier



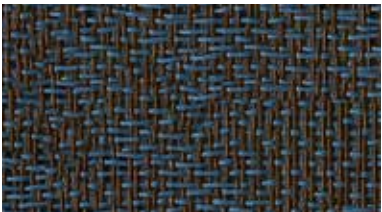
MAHOGANY ECUM J546 D50 ECUM J546 200



KOPI BRONZE ECUM J520 D50 ECUM J520 200



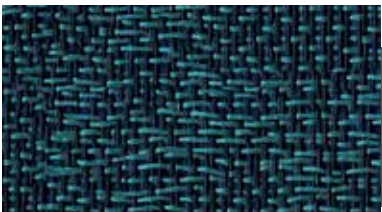
XENON GREY ECUM J521 D50 ECUM J521 200



BOWLAND BLUE ECUM J519 D50 ECUM J519 200



DIAMOND BLUE ECUM J544 D50 ECUM J544 200



VERTIGO BLUE ECUM J543 D50 ECUM J543 200

Made to Order\*

Made to Order\*



Shape cut on site - Ecume J546 Mahogany

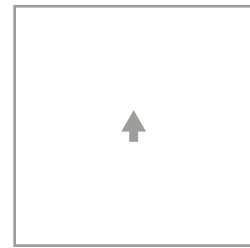
\* This colour is made to order - minimum of order 200 m²



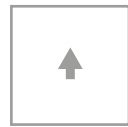
## SHAPE LAB

SHAPES MADE TO ORDER :

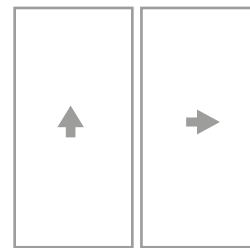
### COMBINABLE SHAPES



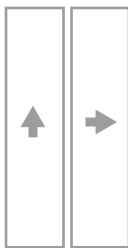
XL TILES  
100 X 100 cm / 39.37" X 39.37"



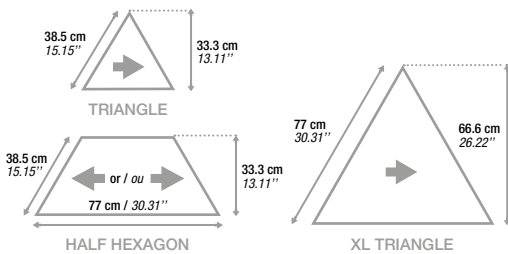
TILES  
50 X 50 cm / 19.69" X 19.69"



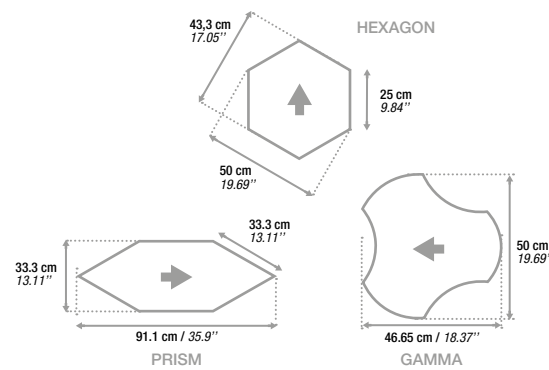
XL PLANKS  
50 X 100 cm  
19.69" X 39.37"



PLANKS  
25 X 100 cm  
9.84" X 39.37"



### NON COMBINABLE SHAPES



↑ Warp direction

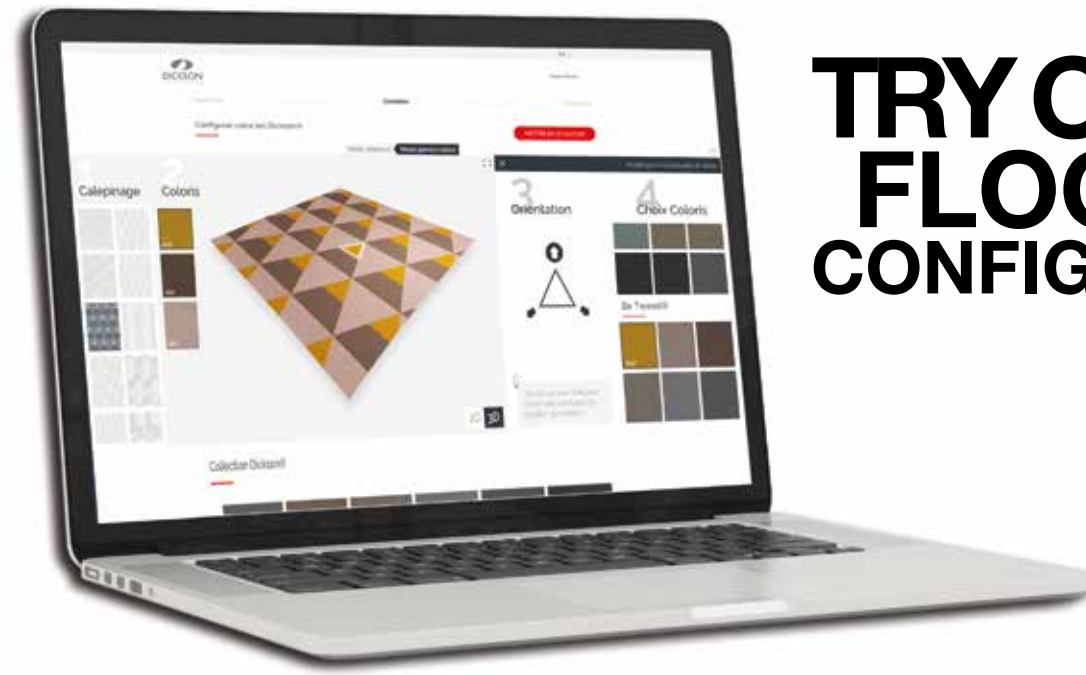
[www.dicksonflooringproject.com](http://www.dicksonflooringproject.com)  
Your flooring configurator for all your projects



Mirage J554 Shell & J556 Umber



Écume J543 Vertigo Blue & J544 Diamond Blue



**TRY OUT THE  
FLOORING  
CONFIGURATOR !**

[www.dicksonflooringproject.com](http://www.dicksonflooringproject.com)

Each room raises new challenges. That's why our

## CONFIGURATOR ALLOWS UNPRECEDENTED SCOPE FOR TESTING AND MODULATING FLOOR SURFACES

From offices to hotels to homes, each space is unique, and so are your design choices. Now available to order in multiple shapes, Dickson Woven Flooring offers countless layout possibilities. Free yourself from standard layouts or complement them by mixing references and shapes to create rhythm, perspectives and reflections to transform interiors.

Allow your imagination free rein by playing with lighting, textures and reflections. With our ranges and their palette of unique colours to choose from, create your own rules and transform your flooring into a design feature.

Your floor becomes  
**A FORM OF CREATIVITY,  
FLOORING AN ART FORM.**

Our Dickson flooring is composed of PVC-coated woven polyester monofilaments joined to a technically advanced soundproofing underlayer by heat setting and coating. Heat action, central to our production process, fuses each element of our product together for advanced wear resistance and perfect dimensional stability. A subtle amalgam of polymers is discernable on the wear side, but does not alter the quality of our product.

The woven structure also gives added character to the flooring surface and naturally plays with the light. The shape, colour and layout give your flooring depth and subtle nuances of colour depending on your perspective and the intensity of the light.



## ÉCUME

## ALLURE

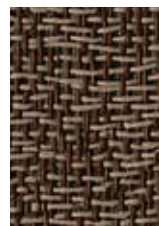
## MIRAGE

## ÉLÉGANCE

## BORÉAL



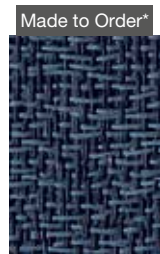
KOPI BRONZE J520



MAHOGANY J546



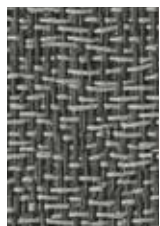
VERTIGO BLUE J543



DIAMOND BLUE J544



BOWLAND BLUE J519



XENON GREY J521



ZAFFRE BLUE J515



CELADON GREEN J539



IRIDIUM SILVER J514



ORKNEY TAUPE J540



YELLOW TAUPE J541



CALDERA ROSE J584



WILD EARTH J525



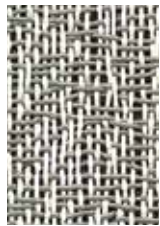
VIPER BLUE J528



ANTRIM BLUE J549



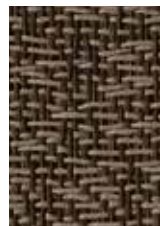
BETULA J559



MOON J557



PERSIAN YELLOW J547



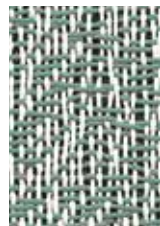
ARIZONA BRONZE J526



SILICON SILVER J523



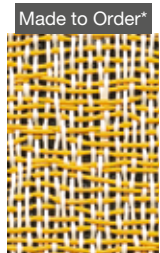
DUSTY GREEN J548



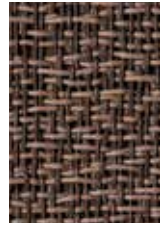
POLAR J568



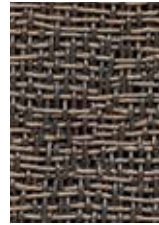
UMBER J566



ORPIMENT J560



PEARL BROWN J553



SMOKE J531



ISLAY BLUE J533



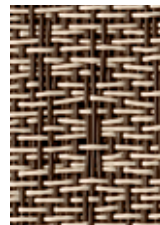
PACIFICA BLUE J552



ALMOND GREEN J551



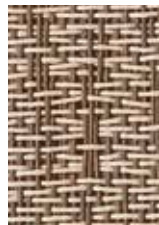
ARDEN GREEN J530



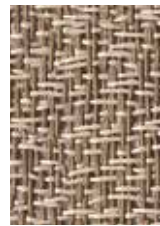
CERAMIC GREY J516



SNOW SHADOW J517



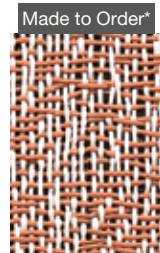
CUMBERLAND BEIGE J518



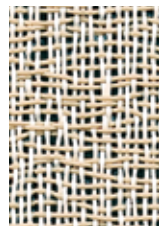
CHAMPAGNE BEIGE J527



SEPIA J555



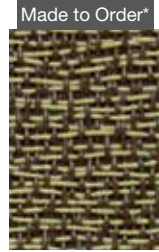
SERANDITE J561



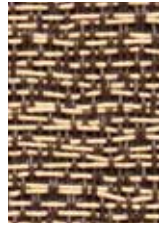
SHELL J554



THYME J563



VETIVER J567



MALT J562



STRAW J564



BLOOM J566



CELADON J568



BAMBOO J565



GOLD J578



PISTACHIO J574



FJORD J582



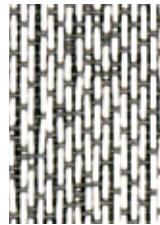
EVERGREEN J580



MATCHA J571



THUNDER J572



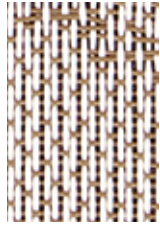
CALOTTE J577



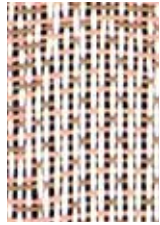
WHISPER J576



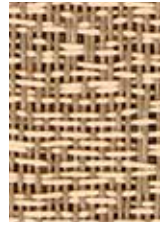
MIST J583



LATTE J575



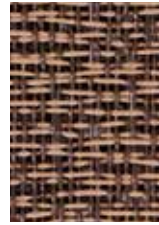
AURORA J579



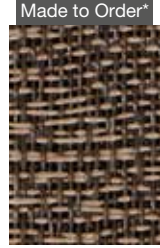
DUNE J573



MEDAL J570



HAVANA J569



BRONZE J581

\* This colour is made to order - minimum of order 200 m²

# WOVENFLOORING

BY DICKSON



# WOVEN FLOORING







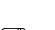









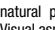
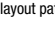



BY DICKSON

## TECHNICAL INFORMATION

**CLEANGARD**  
INTEGRATED PROTECTION  
by DICKSON

**FRAYGUARD**  
CLEAN CUT  
by DICKSON

**SOUNDGUARD**  
ACOUSTIC INSULATION  
by DICKSON


	STANDARD	ALLURE, BOREAL, ECUME, ELEGANCE, MIRAGE
 Use classification	EN ISO 10874	33 Heavy Commercial
 Fire classification	ASTM D 5252	5/5
 Optical smoke density	EN 13501-1	Cfl s1
 Soundproofing	ASTM E 648	1st Class
 Sound absorption coefficient αw	ASTM D2859	Methamine Pill Test - CSPC FF1-70: pass
 Roll width	ASTM E 662	< 450
 Roll length	ISO 10140-3	18 dB
 Tile packaging and size	ASTM E 492	IIC 59
 Thickness <sup>(1)</sup> (+/- 0.3 mm)	EN ISO 354	0,05
 Weight	EN 426	200 cm / 78,74"
 Natural distortion <sup>(2)</sup>	EN ISO 24341	25 m / 27,34 yd
 Castor chair	EN ISO 24342	50 x 50 cm - 19,69 x 19,69" Box of 16 tiles (4 sq.m. / 43,06 sq ft)
 Body voltage	ISO 1765	4 mm / 0,157"
 Residual indentation	ISO 8543	3,55 kg/m² / 84,24 lb/ft²
 Static load		Maximum 2%
 Compression recovery	EN ISO 4918	Intensive use
 Fraying	ISO 6356	< 2,0 kv
 Thermal resistance	EN ISO 24343-1	< 0,2 mm / < 0,008"
 Dimensional stability	ASTM F 914	0,18 mm / 0,007"
 Colour fastness to light	ASTM F970	Conform 250 Psi
 Colour fastness to weather		95%
Slip resistance dry (dynamic coefficient of friction)	EN ISO 10833	Frayproof
Slip resistance wet (ramp test with oil)	ISO 8302	Suitable for underfloor heating
CE Certification	ISO 2551	< 0,1%
Floorscore Certification (rolls + tiles)	ISO 105 B02	8/8
LEED®	AATCC 16 E	5/5
	ISO 105 B04	5/5
	EN 13893	μ > 0,30
	ASTM C 1028	0,81
	DIN 51130	R9
	ASTM C 1028	0,61
	EN 14041	0493-CPR-0101
	SCS-EC10.2-2007	SCS - FS - 02719
	This product can help you earn points within the framework of Leed version 4 and meet the requirements regarding indoor environmental quality: low-emitting materials	

According to EN 1307 standard

<sup>(1)</sup> All our ranges can be combined together for your projects. A slight difference in thickness, due to the different structures of the woven side, is possible and cannot exceed 0.6 mm.

<sup>(2)</sup> Dickson flooring is a textile product, composed on the surface of warp threads aligned and associated with weft threads, by the weaving technique. The perfect perpendicularity of the warp and weft threads does not exist. Therefore, woven vinyl floors will always present natural warp and/or weft deformations that will accentuate the authentic appearance of the weave. Recognizing that this natural phenomenon can alter the final aesthetic result beyond a certain limit, Dickson has set a tolerance for all of its woven flooring lines. Weft deformation: Dickson Flooring tolerance limit = 2%. Visual aspect: our Dickson flooring is composed of a weave of PVC-coated polyester monofilaments combined with an acoustic and technical undercoat by heat-setting and coating. The action of heat, at the heart of our production process, allows the different elements of our products to melt together, thus ensuring their resistance to wear and tear and perfect dimensional stability. Thus, the discrete amalgam of polymers can be detected on the wear side without altering the quality of our products in any way. In addition, the woven structure adds character to the look of your flooring and naturally plays with the light. Varying with the shape, colour and layout pattern, the deep and subtle hues of your flooring change according to the lighting and perspective.



Regulation or protocol	Conclusion	Version of regulation or protocol
French VOC Regulation		Regulation of March and May 2011 (DEVL1101903D and DEVL1104875A)
French CMR components	Pass	Regulation of April and May 2009 (DEVP0908633A and DEVP0910046A)
Italian CAM	Pass	Decree 11 January 2017 (GU n.23 del 28-1-2017)
AgBB/ABG	Pass	Anforderungen an bauliche Anlagen bezüglich des Gesundheitsschutzes (ABG), Entwurf 31.08.2017
Belgian Regulation	Pass	Royal decree of May 2015 (C-2014/24239)
Indoor Air Comfort®	Pass	Indoor Air Comfort 6.0 of February 2017
Formaldehyde Emission Class	E1	EN 16516
Blue Angel (RAL UZ 120)	Pass	Resilient Floor Covering, February 2011
BREEAM International	Compliant	GN22 v2.3 (March 2018): BREEAM Recognised Schemes for VOC Emissions from Building Products
LEED v4 (outside U.S.)	Compliant	LEED v4 for Building Design and Construction (April, 2015)
BREEAM® NOR	Pass	BREEAM-NOR New Construction v1.1 (May 2017)
WELL	Compliant	WELL Building Standard™ version 2 (WELL v2™)

**DICKSON**  
woven flooring

Find out more about our  
approach concerning  
sustainable development:



<sup>(3)</sup> see general warranty conditions at [www.dickson-constant.com](http://www.dickson-constant.com)



 **BREEAM**  
COMPLIANCE

 **REACH**  
COMPLIANCE

 **LEED V4**  
COMPLIANCE



# WOVENFLOORING

BY DICKSON

[www.dickson-constant.com](http://www.dickson-constant.com)  
[www.dicksonflooringproject.com](http://www.dicksonflooringproject.com)

